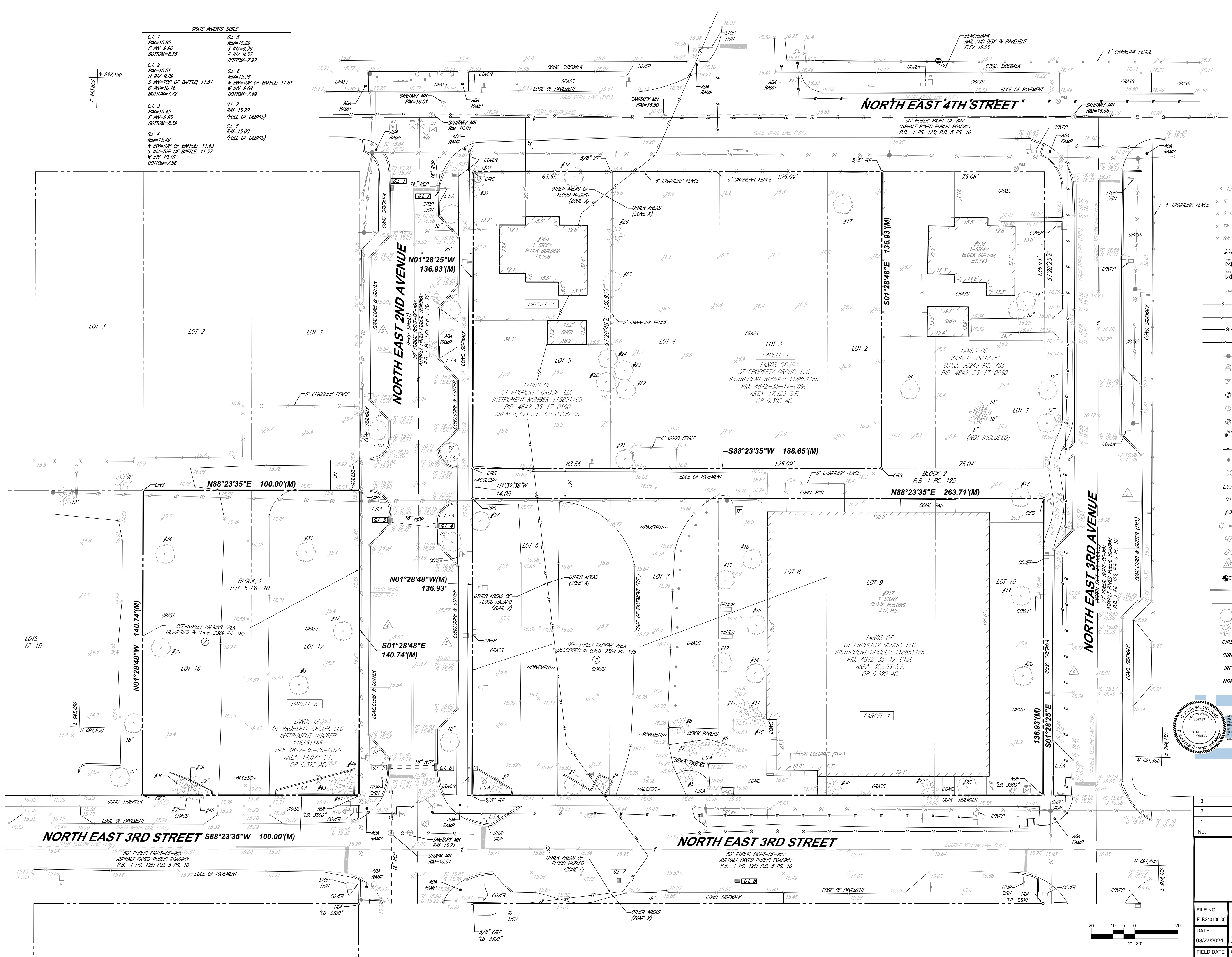


BOHLER ENGINEERING, ALL RIGHTS RESERVED. NO PART OF THIS DOCUMENT IS TO BE REPRODUCED OR TRANSMITTED IN ANY FORM OR BY ANY MEANS, ELECTRONIC OR MECHANICAL, INCLUDING PHOTOCOPYING, RECORDING, OR BY ANY INFORMATION STORAGE AND RETRIEVAL SYSTEM, WITHOUT THE WRITTEN PERMISSION OF BOHLER ENGINEERING, INC.

GRATE INVERTS TABLE			
GL 1	GL 5	GL 6	GL 7
RM=15.65	RM=15.29	RM=15.36	RM=15.22
S INV=9.36	S INV=9.36	N INV=TOP OF BATTLE: 11.61	N INV=TOP OF BATTLE: 11.61
E INV=9.36	E INV=9.36	W INV=9.89	W INV=9.89
BOTTOM=8.36	BOTTOM=7.92	BOTTOM=7.49	BOTTOM=7.49
GL 2	GL 3	GL 4	GL 8
RM=15.51	RM=15.45	RM=15.43	RM=15.00
N INV=9.89	E INV=9.85	N INV=TOP OF BATTLE: 11.43	N INV=TOP OF BATTLE: 11.57
S INV=TOP OF BATTLE: 11.81	S INV=9.85	W INV=10.16	W INV=10.16
W INV=9.89	BOTTOM=8.39	BOTTOM=7.56	BOTTOM=7.56



**LEGEND**

- X 123.45 EXISTING SPOT ELEVATION
- X TC 123.45 EXIST. TOP OF CURB ELEVATION
- X G 122.95 EXIST. GUTTER ELEVATION
- X TW 123.45 EXIST. TOP OF WALL ELEVATION
- X BW 122.95 EXIST. BOTTOM OF WALL ELEVATION
- HYDRANT
- WATER VALVE
- BACK FLOW PREVENTED
- OH OVERHEAD WIRES
- APPROX. LOC. UNDERGROUND GAS LINE PER UTILITY MARKOUT
- APPROX. LOC. UNDERGROUND WATER LINE PER UTILITY MARKOUT
- APPROX. LOC. UNDERGROUND SEWER LINE PER UTILITY MARKOUT
- APPROX. LOC. FEMA FLOODPLAIN ZONE LINE
- UTILITY POLE
- ELECTRIC METER
- TRANSFORMER
- SANITARY MANHOLE
- TELEPHONE MANHOLE
- STORM DRAIN MANHOLE
- WATER METER
- SIGN
- BOLLARD
- FENCE
- L.S.A. LANDSCAPED AREA
- GL GRATE INLET
- XX TREE DESCRIPTION (SEE TABLE SHEET 1)
- AREA LIGHT
- CLEAN OUT
- FIRE DEPARTMENT CONNECTION
- DENOTES PARKING SPACE COUNT
- BENCHMARK
- UTILITY POLE/LIGHT POLE
- GUY WIRE
- TREE (SIZE AS NOTED)
- PALM TREE (SIZE AS NOTED)
- CAPPED 5/8" IRON REBAR SET: STAMPED "LB. 8085"
- CAPPED IRON REBAR FOUND
- IRF IRON REBAR FOUND
- NDF NAIL & DISK FOUND

COLLIN WOODYARD  
PROFESSIONAL SURVEYOR AND MAPPER NO. LS7423

3	ADDED TREE INFORMATION	AS	10/04/2024
2	REVISED NOTE #2	AS	9/10/2024
1	ADDED FEMA FLOOD ZONE LINE	AS	9/9/2024
No.	DESCRIPTION OF REVISION	BY:	DATE

**BOUNDARY & TOPOGRAPHIC SURVEY**

**POMPANO PICKLE, LLC**

210-217 NE 3RD STREET &  
200 NE 4TH STREET  
CITY OF POMPANO BEACH  
POMEROY COUNTY, FLORIDA

**BOHLER ENGINEERING, INC.**

210-217 NE 3RD STREET, SUITE 101E  
POMEROY COUNTY, FLORIDA 33061  
951.371.0280  
www.bohlerengineering.com

FILE NO. FLB240130.00

DATE 08/27/2024

FIELD DATE 08/21/2024

CREW CHIEF J.V.

AS. AS.

REVIEWED

APPROVED

SCALE

DATE 11/06/2024

P224-12000019

2 OF 2

